

Incremental shaft encoder BTIV

features

- miniature shaft encoder
- high resolution up to 1024 pulses
- housing diameter 24 mm



general data

voltage supply	5 VDC ±5% (05T) 10 - 30 VDC (24K)
max. supply current no load	typ. 25 mA (at 5 VDC) (05T) typ. 25 mA (at 24 VDC) (24K)
pulse range	see order designation
pulse tolerance	±10% at 30 kHz
max. switching frequency	100 kHz

mechanical data

max. revolutions	18'000 rpm
torque	max. 0,6 cNm (20 °C)
max. shaft load	axial: 5 N radial: 8 N
max. protection class	shaft: IP 54 housing: IP 54
material	housing: aluminum
weight	approx. 50 g

ambient conditions

temperature range	-20...+85 °C
relative humidity	max. 95% non condensing
vibration	IEC 60068-2-6 (≤ 100 m/s ² / 55-2'000 Hz)
shock	IEC 60068-2-27 (≤ 300 m/s ² / 11 ms)
noise immunity	EN 61000-6-2
emitted interference	EN 61000-6-3

order designation

BTIV 24S16		G4	
			connection
			4 cable 1 m axial
			5 cable 1 m radial
			shaft
		G4	shaft 4 mm IP 54
			standard pulse range
			30 300 600
			60 360 1000
			100 500 1024
			voltage range, output signals
			05T 5 VDC TTL
			24K 8 - 30 VDC push-pull, short-circuit protection

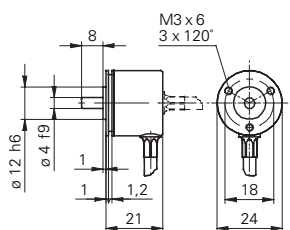


1

dimensions

-4

-5



assignment cable

for connection reference **-4** and **-5**

05T (5 VDC TTL)

24K (10 - 30 VDC push-pull, short-circuit protection)

cable color	signals
brown	+Vs
green	CHA
yellow	CHB
grey	CHN
white	0 V
screen	connected to flange